



YOUR JOURNEY. YOUR COMMUNITY. YOUR IMPACT.

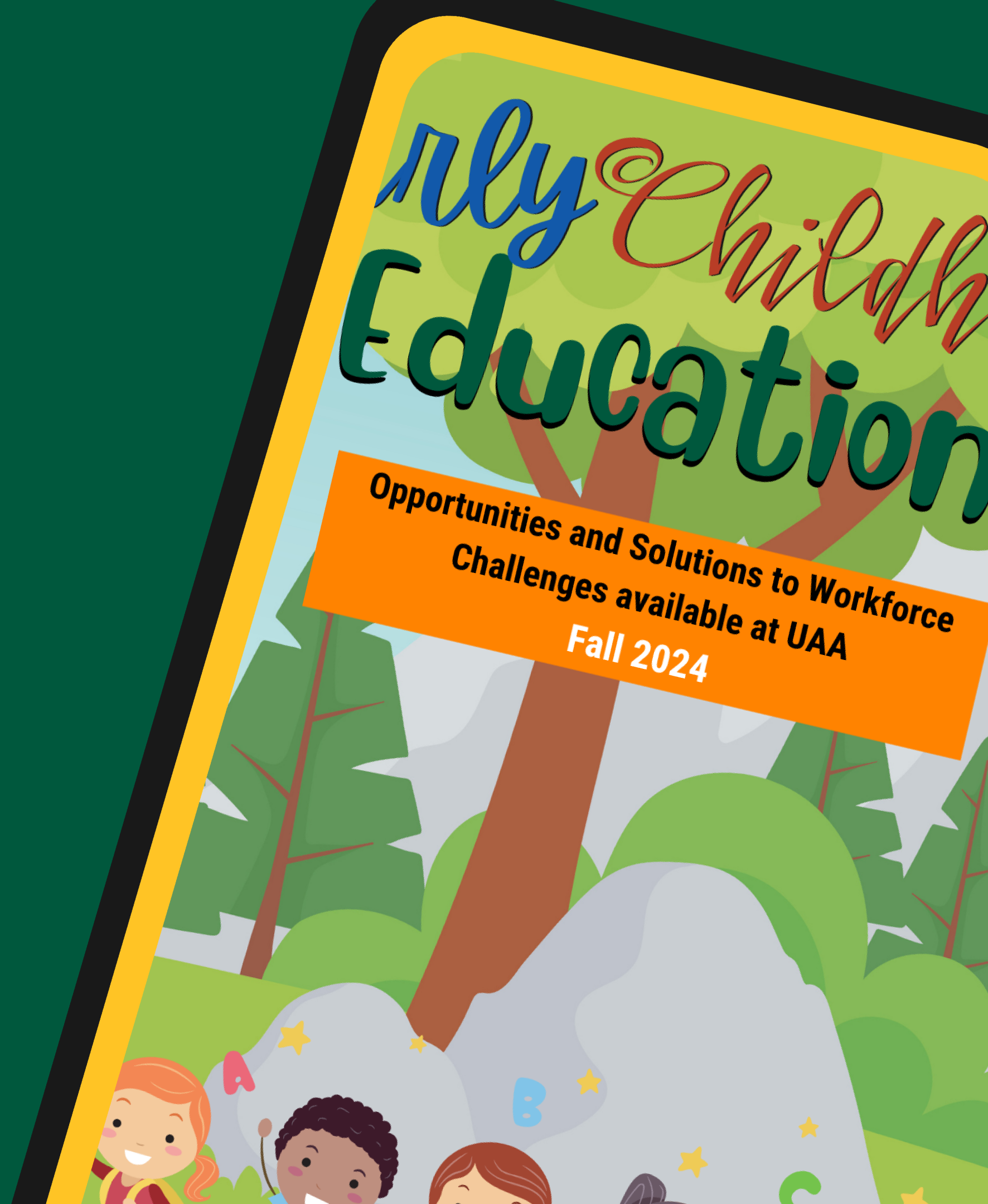
School of Education
UNIVERSITY of ALASKA ANCHORAGE

PROVISIONAL PROGRESS REPORT – 2024

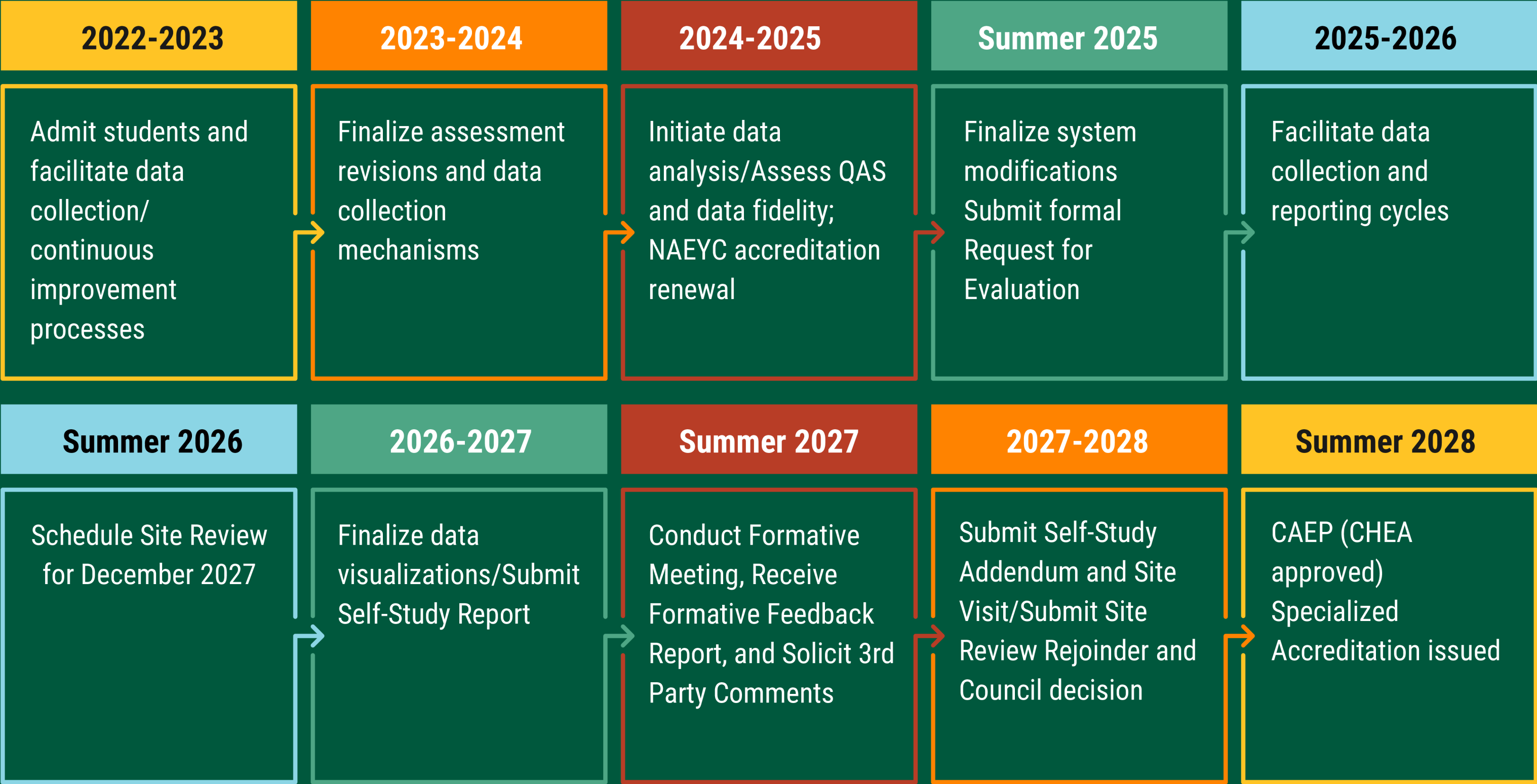
Early Childhood Education

Prepared by: Dr. Tonia A. Dousay, Dean, University of Alaska Anchorage School of Education

Under the direction of: Dr. Denise Runge, Provost, University of Alaska Anchorage and Dr. Susan Kalina, Vice Provost for Academic Affairs & Institutional Effectiveness, University of Alaska Anchorage

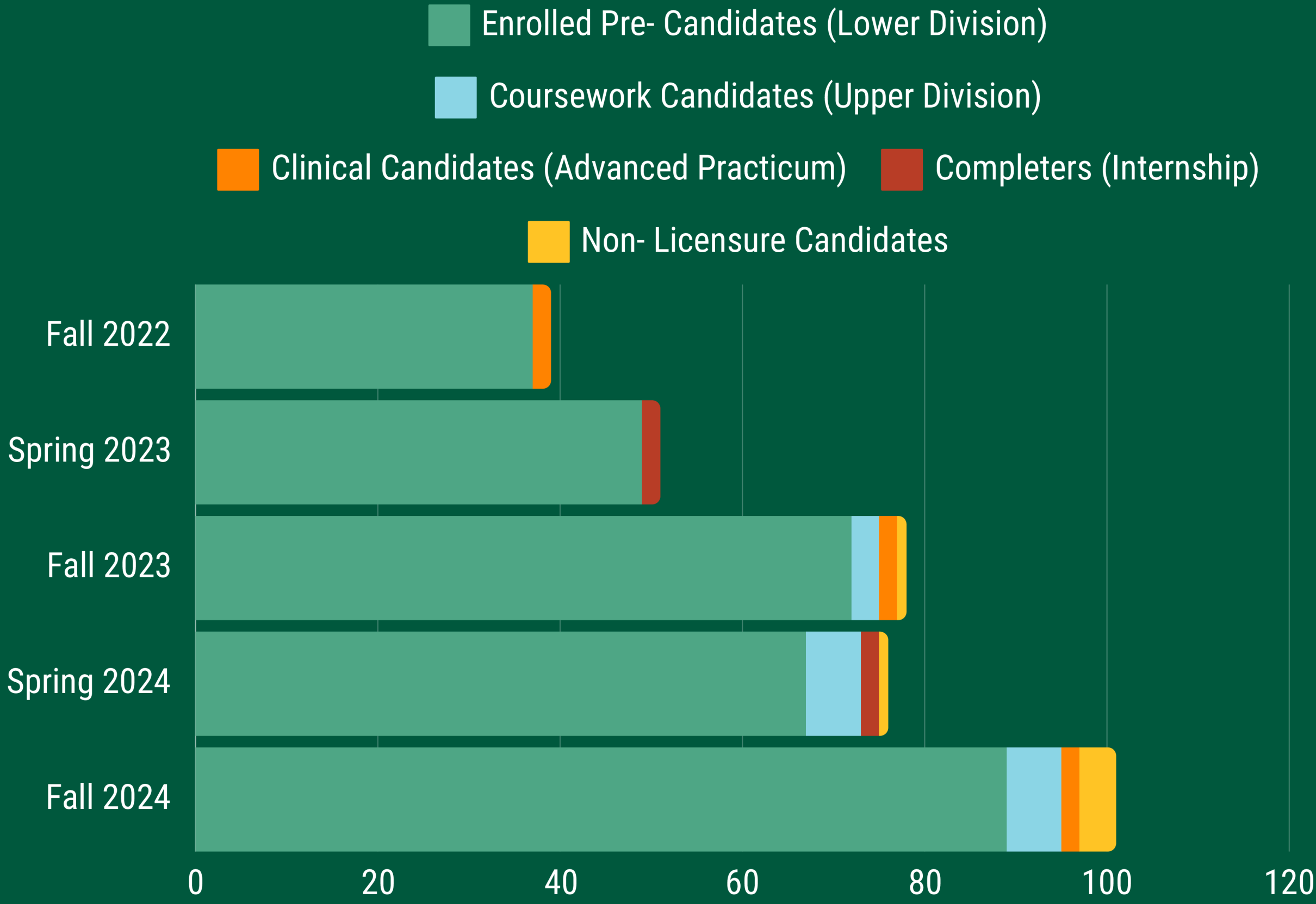


SPECIALIZED ACCREDITATION TIMELINE

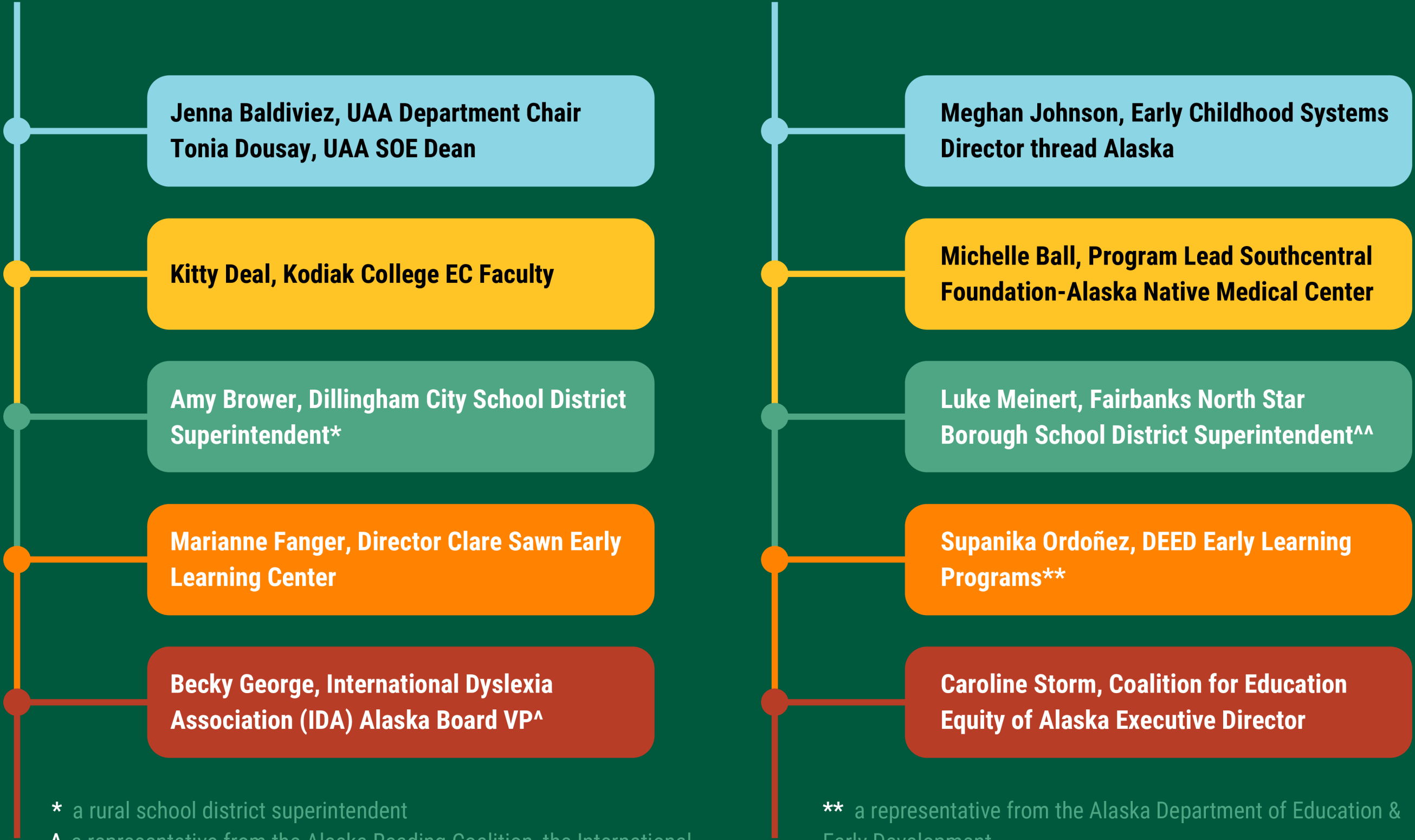


ENROLLMENT TRENDS 22-24

A total of 101 early childhood education professionals are enrolled in the B.A. at UAA in Fall 2024.



■ ■ ■ ECE ADVISORY COMMITTEE 24-25



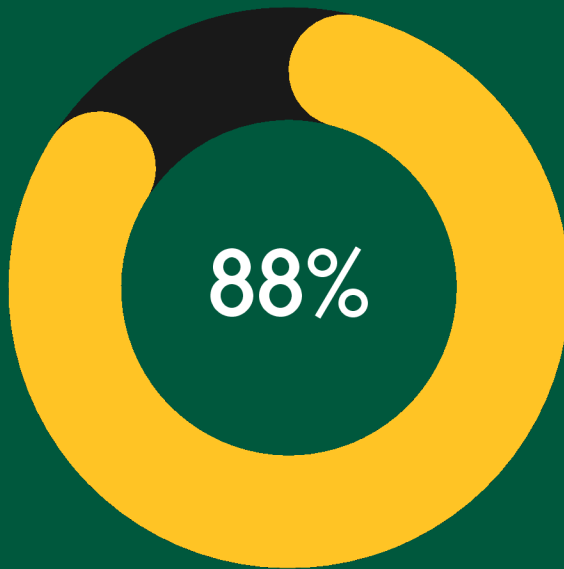
* a rural school district superintendent
^ a representative from the Alaska Reading Coalition, the International Dyslexia Association-Alaska, or similar organization

** a representative from the Alaska Department of Education & Early Development
^^ an urban school district superintendent

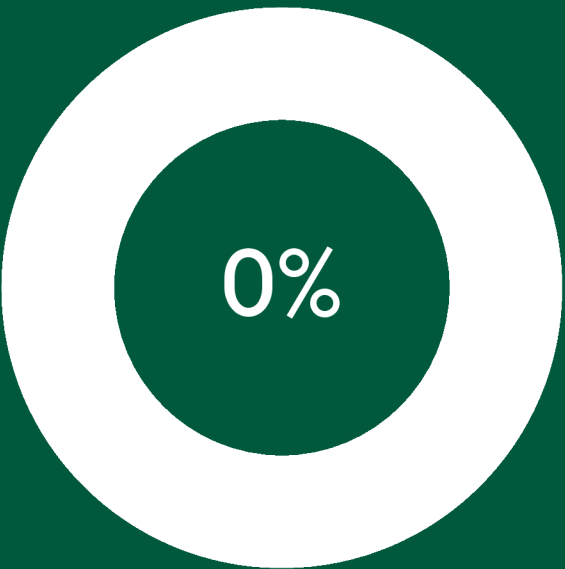
LITERACY DEVELOPMENT READINESS



EDEC A320 FOUNDATIONS OF LITERACY & LANGUAGE DEVELOPMENT



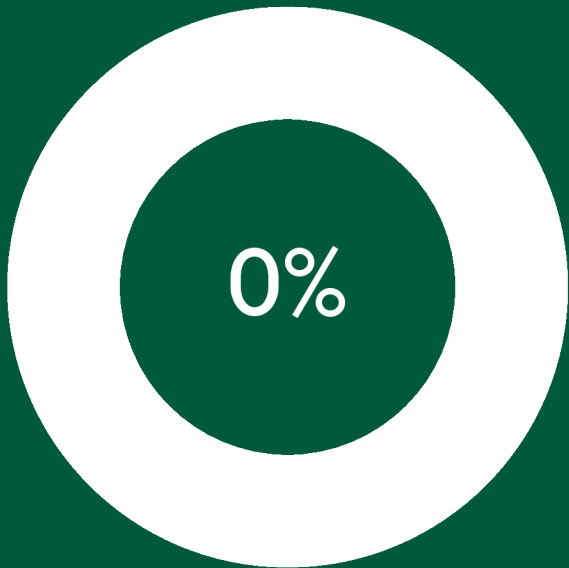
EDEC A321 LANGUAGE, READING AND CULTURE



EDEC A407 OBSERVE, DOCUMENT, & ASSESS YOUNG CHILDREN



EDEC A408 CHILDREN'S LITERATURE: EARLY CHILDHOOD YEARS



EDEC A404 LITERACY METHODS FOR YOUNG CHILDREN

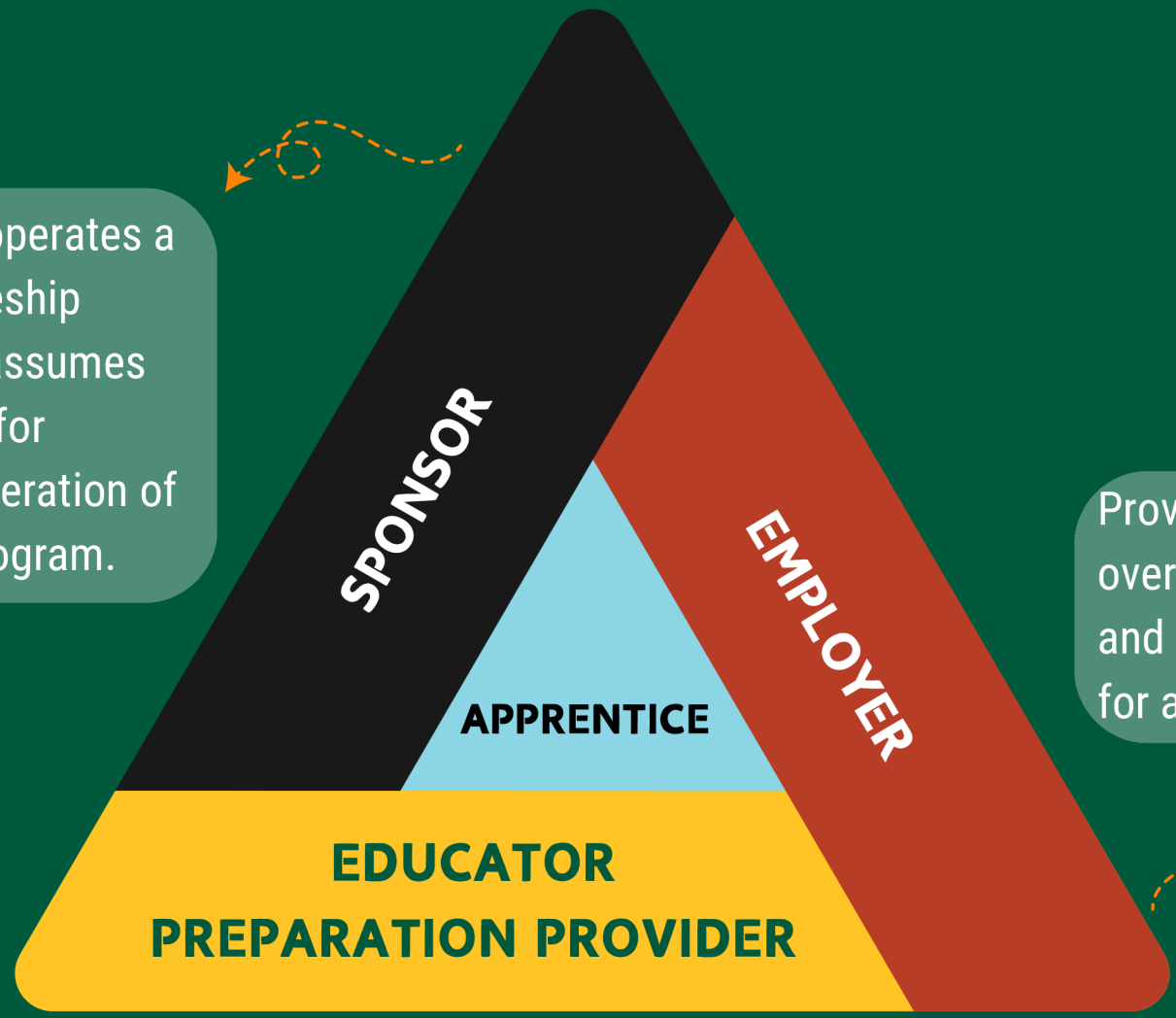


EDEC A495Y/Z EARLY CHILDHOOD STUDENT TEACHING 1/2

CONCEPTUAL AND OPERATIONAL FRAMEWORKS



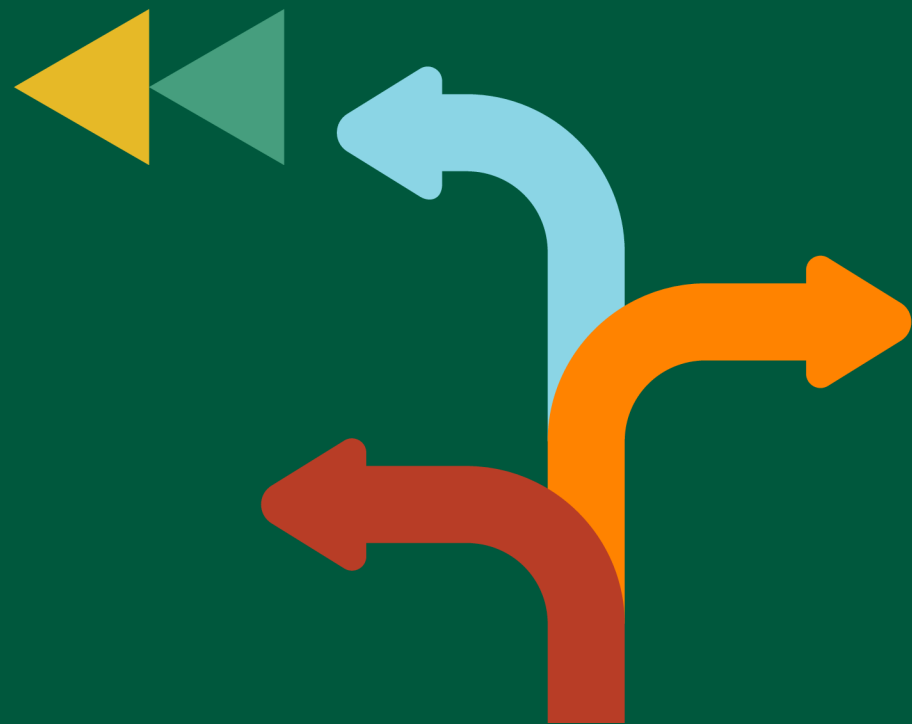
An organization that operates a Registered Apprenticeship Program. This entity assumes the full responsibility for administration and operation of the apprenticeship program.



Provides jobs to apprentices, oversees training development, and provides hands-on learning for apprentices.

Provides the related technical instruction (RTI) required to successfully meet all state and teacher preparation program standards.

■ ■ ■ DESIGNING A REGISTERED TEACHER APPRENTICESHIP FOR ALASKA



Flexible Entry/Exit



Culturally Responsive
Scheduling



Condensed & Stacked
Courses



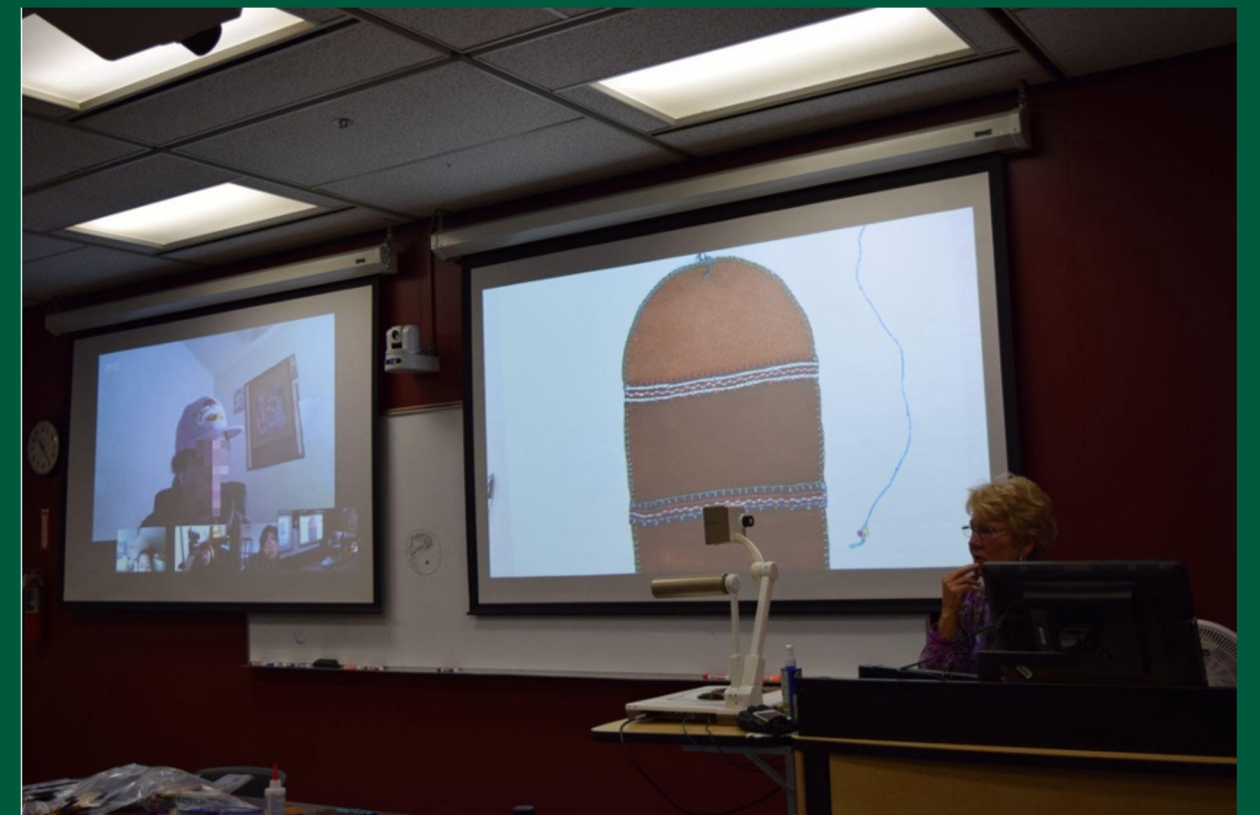
Mentoring &
Performance

■ ■ ■ BUILDING A NETWORK FOR CULTURALLY RESPONSIVE TEACHER EDUCATION



Teacher Cultural Standards

Culturally-responsive educators incorporate local ways of knowing and teaching in their work. Elder Susan Malutin teaches a skin sewing project to UAA's EDEC A106 and AKNS A240 students



Early Childhood Education

in the School of Education
University of Alaska Anchorage

uaa.teacherapprentice@alaska.edu
uaa_soedu@alaska.edu
uaa.alaska.edu/academics/school-of-education

Jenna Baldiviez, Department Chair
Dr. Tonia A. Dousay, Dean

YOUR JOURNEY. YOUR COMMUNITY. YOUR **IMPACT.**

UA is an affirmative action/equal opportunity employer, educational institution and provider and prohibits illegal discrimination against any individual: www.alaska.edu/nondiscrimination



School of Education
UNIVERSITY of ALASKA ANCHORAGE

